

15 OCTOBER 2023

TWENTY-EIGHTH SUNDAY IN ORDINARY TIME

# † Saint Lawrence Church

1000 North Greece Road

Rochester, NY 14626

585-723-1350

[www.stlawrencegreeceeny.org](http://www.stlawrencegreeceeny.org) • [www.stlawrenceschool.org](http://www.stlawrenceschool.org)



**As we pray urgently for peace,  
we recall especially all the  
families and individuals  
suffering from these events.**

- Pope Francis



# THIS WEEK'S PRAYER



***This week, we light the  
Sanctuary Lamp in Memory of  
Pantalone, Pierce, Wright & Kelly  
Families  
By Ginny Pierce***

## ***Monday, October 16***

*Weekday*

8:30 a.m. Communion Service, prayer for Priestly Vocations

## ***Tuesday, October 17***

*Saint Ignatius of Antioch, Bishop and Martyr*

8:30 a.m. Communion Service, prayer for Priestly Vocations

## ***Wednesday, October 18***

*Saint Luke, Evangelist*

8:30a.m. Communion Service, prayer for Priestly Vocations

## ***Thursday, October 19***

*Saints John de Brebeuf and Isaac Jogues, Priests, and Companions, Martyrs*

8:30 a.m. Communion Service, prayer for Priestly Vocations

## ***Friday, October 20***

*Weekday*

8:30 a.m. No Mass and No Communion Service

## ***Saturday, October 21***

*Weekday*

4:00 p.m. Mass for Bernice & Warren LaVigne by Family

## ***Sunday, October 22***

### ***Twenty-Ninth Sunday In Ordinary Time***

8:00 a.m. Mass for Beatrice Eichas by Daniel & Karen Eichas & Family

10:00 a.m. Mass for St. Lawrence Parishioners by Father Chase

## **Readings for the week of October 16, 2023**

|                        |  |
|------------------------|--|
| Monday, October 16:    | Rom 1:1-7/Lk 11:29-32                  |
| Tuesday, October 17:   | Rom 1:16-25/Lk 11:37-41                |
| Wednesday, October 18: | 2 Tm 4:10-17b/Lk 10:1-9                |
| Thursday, October 19:  | Rom 3:21-30/Lk 11:47-54                |
| Friday, October 20:    | Rom 4:1-8/Lk 12:1-7                    |
| Saturday, October 21:  | Rom 4:13, 16-18/Lk 12:8-12             |
| Sunday, October 22:    | Is 45:1, 4-6/1 Thes 1:1-5b/Mt 22:15-21 |

Due to early submission no mass attendance available

## October 7 & 8, 2023 Collection

|                     | Amount Received | Weekly Budget | Surplus (Shortfall)     |
|---------------------|-----------------|---------------|-------------------------|
| Sunday Collection   | Not Available   | Not Available | Due to Early Submission |
| General Maintenance | Not Available   | Not Available | Due to Early Submission |
| School Support      | Not Available   | Not Available | Due to Early Submission |

## Mass Schedule

Saturday 4:00 pm  
 Sunday 8:00 am  
 10:00 am  
  
 Mon - Wed, Fri 8:30 am  
 Thu Communion Service 8:30 am.

Holy Days of Obligation  
 Please see bulletin.

## Confessions

Saturday 3:00 pm

## Anointing of the Sick

Please call us if you or a family member wish to be anointed.

## Baptism

Parents should contact the Parish Office at the rectory as soon as they know they are expecting.

## Marriage

Engaged couples should contact us at least **one year** in advance of their desired date.

## Office Hours

Monday - Friday  
 9 a.m. - Noon, 1 pm - 4 pm  
 Phone: 723-1350 fax: 723-1361

## St. Lawrence School

585-225-3870

## Internet and Social Media

Email - rstlawre@dor.org  
 website - stlawrencegreece.org  
 Facebook - www.fb.me/STL Greece

## Marriage Banns

Week III Allison Ziobrowski & Joseph Maier

## Parish Staff

### Rectory Office 723-1350

The Very Rev. Lee P. Chase, V.F., S.T.L.  
*Dean, Monroe West Deanery for the Diocese of Rochester, Pastor, x 207*

### St. Lawrence School

Crystal Criticos - *School Principal, 225-3870*

### Finance Administration

Marisa Stieve  
*Regional Finance Director, x.206*  
 Dawn Nudo  
*Regional Finance Manager, x 205*  
 Cameron Hyzy  
*Regional Business Manager, x203*

### Pastoral Ministry

Deacon David Squilla  
*Pastoral Associate, x. 212*  
 Deacon Manny Asis  
*Senior Deacon, x. 201*

### Administrative Staff

Wendy Speciale  
*Business Manager, x. 201*  
 Jim Grotke  
*Maintenance, x. 201*

### Faith Formation Ministry

Amanuel Malik  
*Regional Faith Formation Director (585) 663-2244, x106*  
 Debbie Cichelli  
*Regional Faith Formation Administrator, 225-7320*  
 Donna Gray  
*Regional Youth Ministry/CYO, 225-1485*

### Music Ministry

M. Virginia Pierce  
*Music Director, 227-7236*  
 Susan Judkins  
*Song Prayers, 797-3719*  
 Steve Amico  
*Faithful Voices, 225-7338*

# WHAT'S NOW

## This Week At St. Lawrence Church

### Monday, October 16

|                                       |          |
|---------------------------------------|----------|
| CYO Cheer - School                    | 2:30p.m. |
| Human Develop. Mtg. - Deacon Hall     | 6:15p.m. |
| Bible Study - Deacon Hall             | 6:30p.m. |
| CYO Basketball Registrations - School | 6:30p.m. |

### Tuesday, October 17

|                           |          |
|---------------------------|----------|
| Bible Study - Deacon Hall | 9:30a.m. |
| Scouts Mtg.- Deacon Hall  | 5:30p.m. |
| Faithful Voices - Church  | 7:00p.m. |

### Wednesday, October 18

|                            |          |
|----------------------------|----------|
| CYO Cheer - School         | 2:30p.m. |
| Daisey Group - Deacon Hall | 4:00p.m. |
| CYO Soccer - Soccer Field  | 4:00p.m. |
| Song Prayers - Church      | 7:15p.m. |

### Thursday, October 19

|                           |          |
|---------------------------|----------|
| CYO Soccer - Soccer Field | 4:00p.m. |
|---------------------------|----------|

### Friday, October 20

|                                  |          |
|----------------------------------|----------|
| Walk-A-Thon Set-up - Deacon Hall | 8:00a.m. |
|----------------------------------|----------|

### Saturday, October 21

|                           |           |
|---------------------------|-----------|
| Walk-A-Thon - Deacon Hall | 10:00a.m. |
|---------------------------|-----------|

### Sunday, October 22

|   |           |
|---|-----------|
| K of C Chicken BBQ - School Parking Lot | 11:00a.m. |
|---|-----------|

### Area Church Weekday Masses

St. Mark's Church:

M-F 8:00 a.m.

St. Leo Church:

M 5:30 p.m., T-Th 8:30 a.m.

St. John, Ridge Road:

M— Th 815 a.m.

St. Charles Borromeo:

M-F 8:00 a.m.

Our Mother of Sorrows:

T, W 8:00 a.m.

Holy Cross Church:

M and F 8:30 a.m.; Th 5:30 p.m.

St. Lawrence  
CATHOLIC SCHOOL

2023  
**WALKATHON**  
OCTOBER 21, 2023  
10 AM - 1 PM  
AT ST. LAWRENCE

[www.stlawrenceschool.org/walkathon](http://www.stlawrenceschool.org/walkathon)

WALK WITH US TO CELEBRATE  
60 YEARS AND SUPPORT OUR  
ST. LAWRENCE STUDENTS!  
ENJOY BOUNCE HOUSES, GAMES,  
CRAFTS, MUSIC, TEMPORARY BODY  
ART, DELICIOUS FOOD, COFFEE,  
SWEET TREATS, AND MORE!

**JESUS IS KEY  
UNLOCK LIFE'S TREASURES**



# **BBQ Fundraiser Dinner**

**\*\*St. Lawrence Parking Lot\*\***

**1000 North Greece Road**

**Sunday, October 22, 2023**

**11:00AM until sold out**

\$13.00 Includes:

½ charcoal roasted chicken

Two homemade sides

(BBQ Beans and Coleslaw)

**Roll**

Sponsored by:

The Knights of Columbus

Council # 11374

For information contact:

Ralph Dinitto 802-2873

Albert Bodamer 227-5734

Ken Kruger 225-5975

Catered by:

St. Mark's Knights of Columbus

**THIS IS ONE OF OUR FUNDRAISERS  
TO HELP THE NEEDY IN OUR AREA**

[stmarksknights.org](http://stmarksknights.org)

**Share Sunday – October 14/15, 2023**

This weekend, October 14 and 15, the Saint Lawrence Human Development Committee will collect items to benefit the Focus Pregnancy Center. Focus Pregnancy Center, located on University Avenue in the City, continues to help many people, who are in need of services. They not only supply needed items to families, but give pregnancy tests and ultra sounds. The need for these services is great, as their shelves empty fast.

The following items are especially requested at this time, and would be greatly appreciated:

Tippy Toes or Gentle Ease baby formula from Wegmans or Tops (any generic Enfamil, with yellow top is greatly appreciated.)

New bottles and bottle brushes

New pacifiers (0-3 months)

Children's clothing – sizes 0 to 3 months (including early childhood, onesies, baby outfits, hat and sweater sets, blanket sleepers, pajamas, little socks)

Crib sheets and blankets

Diapers (most needed are newborn and sizes 4, 5 & 6)

Pull-ups, sizes 4 and 5)

Diaper wipes, baby lotion, wash, soap, or shampoo (please no Johnson & Johnson products)

Gift bags in pink and blue

Anything baby related

Also needed are gently used or new car seats (must not be older than six years)

Used strollers or high chairs

Blankets for adults (twin or double)

Adult deodorant, tooth brushes and tooth paste, shampoo, conditioner, lotion

Also needed are gently used or new car seats (must not be older than six years)

Used strollers or high chairs

Please bring your donations to church by 11:00 Sunday, October 15. Thank you for your generosity.

Human Development Committee



## RICHARD J. BORRELLI

Associate Real Estate Broker

REALTOR®

St. Lawrence

Parishioner

rjborrelli@aol.com

www.rickborrelli.com

585-600-7425

# WCI Realty

2450 West Ridge Rd,  
Suite 308 Rochester, NY 14626



## SUPPORT OUR ADVERTISERS!



Complete  
Residential & Commercial  
Plumbing Services

441 Elmgrove Road,  
Rochester, NY 14606

# 426.5068

www.gattiplumbing.com

## Community Wishbook

Rochester's Charity Giving Guide

"Your donations can  
make wishes come true"

If you have items or time to  
donate to a local charity,  
please visit

www.communitywishbook.org

Small Job Specialist

## I'VE GOT A TOOL FOR THAT

Fix or Repair, Build, Assemble & Install

Alan Redfern  
Parishioner



CELL (585) 752-0978



SALES • SERVICE • PARTS

Repairs on all Makes  
& Models of Lawn Mowers

10 Point Maintenance \$90.00 (Plus Parts)

Pick Up & Delivery Available

585-392-9010

1303 Manitou Rd., Hilton, NY

## Cremation for Catholics



- Honoring tradition
- Affordable plans
- Options to honor your final wishes

Bartolomeo & Perotto  
FUNERAL HOME, INC  
1411 Vintage Lane, Greece

585 • 720 • 6000  
bartolomeo.com

## WE'RE HIRING!

AD SALES EXECUTIVES

BE YOURSELF.  
BRING YOUR PASSION.  
WORK WITH PURPOSE.

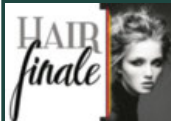
- Paid training • Some travel
- Work-life balance
- Full-Time with benefits
- Serve your community



Contact us at  
careers@4lpi.com or  
www.4lpi.com/careers

FULL SERVICE SALON  
USING GOLDWELL PRODUCTS

Serving the Whole Family Since 1969



(585) 225-3440  
2590 W RIDGE RD, STE 4  
GREECE, NY 14626



## Madison Place

A 55+ Community

NOW LEASING

Brand New Luxury  
Apartment Homes  
Come home to where  
the living is easy

For more information  
please contact Elena

(585) 392-2177

www.madisonplacecommunity.com

## WE APPRECIATE OUR ADVERTISERS!

They allow us to print  
this bulletin. Thank you!



Custom Built Single Family Homes  
Conveniently Located off 519 Mill Rd.

## Building Greece for Over 40 Years

(585) 392-5200

www.TRA-MAC.com

ToptoBottomRochester.com

Ask yourself, is your repairman too  
expensive, unreliable, unpredictable?

## #1 IN REPAIRS

- Gutter Cleaning
- Roofing
- Chimney
- Gutters
- Masonry
- Siding
- Carpentry
- Insulation
- Snow & Ice
- Chimney Liners
- Basement Walls Painted/Repaired
- Water Proofed
- Doors, Etc.

## Since 1988 TOP TO BOTTOM

Expert Evaluation  
Fully Insured  
Free Estimates  
Guaranteed  
Senior Discount  
Your Safest Choice

## 338-9865

For 24 Hour Emergencies,  
Call 764-8204



34th Year Parish Sponsor Johnathon A. Geer



## \$10 EGG COMBO BREAKFAST!

Egg, Potato, Toast & Coffee - Mon-Thurs  
(Except Holidays)

Must Present Coupon in Person  
(limit 1 coupon per party)

2171 West Henrietta Rd., Brighton, NY  
SUNNYSFAMILYDINER.COM

## Happier at Home

In-Home Care



Marie  
President/CEO



Donna  
Business Support Manager

(585) 633-2060

www.happierathome/westrochester.com



For ad info. call 1-800-477-4574 • www.4lpi.com

St. Lawrence, Rochester, NY

06-0101

# SUPPORT OUR ADVERTISERS!



**FREE**  
AD DESIGN  
with purchase  
of this space

CALL 800-477-4574

**Enhanced Assisted  
Living and Memory  
Care with a *whole  
lotta heart.***

**THE VILLAGE**  
AT MILL LANDING

45 MILL Road • Rochester

585.720.3033

TheVillageAtMillLanding.com

**A&J Tax, Inc.**



*Accounting, Payroll,  
& Tax Services*

**Joseph M. Hendrix**

1225 Long Pond Road  
Rochester, NY

**585-227-4626**

**LET'S GROW YOUR BUSINESS**

Place Your Ad Here and Support  
Our Parish!

CONTACT ME **Brett Burt**

bburt@4LPi.com • (800) 477-4574 x6443

**Business • Personal  
Estates & Trusts  
Out of State Returns**

joe@ajtaxinc.com  
www.ajtaxinc.com



**GENE WELCH**

ATTORNEY / PARISHIONER

CALL TODAY: (585) 899-1458

400 LINDEN OAKS SUITE 110  
ROCHESTER, NY

Attorney Advertising: Prior results do not guarantee a similar outcome.

**IF YOU LIVE ALONE You Need**

**MDMedAlert!**<sup>TM</sup>  
At HOME and AWAY!

✓ Ambulance ✓ Police ✓ Family  
✓ GPS & Fall Alert

**CALL NOW!**

**800.808.9294**

As Low As

**\$19<sup>95</sup>**  
/mo.

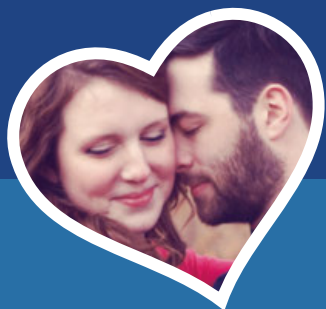


\*Have peace of mind. Mom remains independent.



[md-medalert.com](http://md-medalert.com)

**catholicmatch®**  
New York



CatholicMatch.com/NY



Serving Greece  
Residents  
for over 60 years!

858 Manitou Rd, Hilton, NY

Phone: **585-392-3222**

Fax: **585-392-2126**

[www.nysfence.com](http://www.nysfence.com)

**SUPPORT  
OUR PARISH**

Local business ads  
sponsor the printing of  
our bulletin.  
[4lpi.com/adcreator](http://4lpi.com/adcreator)

**Place Your Ad Here and  
Support our Parish!**

Instantly create and purchase  
an ad with

AD  
CREATOR  
STUDIO



[4lpi.com/adcreator](http://4lpi.com/adcreator)

*Reliable, Local,  
Family Owned & Operated*

*Kitchen, Bathroom, Basement Remodeling,  
Flooring, Windows, Tile, Carpentry,  
Plumbing, Electrical & more*

NO JOB TOO BIG OR SMALL - FREE ESTIMATES

(585) 303-6979



[rosaremodeling@rochester.rr.com](mailto:rosaremodeling@rochester.rr.com)  
[www.rosaremodeling.com](http://www.rosaremodeling.com)



For ad info. call 1-800-477-4574 • [www.4lpi.com](http://www.4lpi.com)

St. Lawrence, Rochester, NY

06-0101