

# † Saint Lawrence Church

1000 North Greece Road

Rochester, NY 14626

585-723-1350

[www.stlawrencegreeceeny.org](http://www.stlawrencegreeceeny.org) • [www.stlawrenceschool.org](http://www.stlawrenceschool.org)



## MUSINGS

*By Father Lee Chase*

One would think that when the summer comes, things will slow down. Au contraire!

### **CMA**

We concluded our CMA year with a \$13,000 shortfall that we needed to make up. Thankfully, our bishop, Bishop Matano, did reduce that amount to \$12,000 which helped us. Thank you to all of you who did donate funds to the church in June. That did help us make up that shortfall.

St. Lawrence Church is participating in a pilot program for next year's CMA. I have written to some of our parishioners who have demonstrated leadership in their CMA donations in the past. I am hoping that by meeting with them in person and answering any questions they may have, we can establish a good foundation for the CMA for next year, before the Fall kickoff. If I have written to you and you haven't received a phone call from me—would you call me? Some of the phone numbers we have are not up to date. Thank you.

### **Frank Arvizzigno**

Our school principal, Frank Arvizzigno, has been appointed as the Diocese of Rochester Superintendent of Catholic Schools and will begin that new position on August 1. Please come to a reception in his honor after the 10:00 a.m. Mass on July 30th. I hope many of you can come and offer him a thank you and wish him well on his way!

### **Knights of Columbus**

On the same weekend as our reception for our outgoing principal, the K of C will have offer another Chicken BBQ. So please come and support them and get a great summer meal!

### **Visiting Missionary**

On that same weekend, July 29 and 30, we will welcome our summer visiting missionary for the Society of the Propagation of the Faith. This year, we welcome a religious sister from the Comboni Sisters. On page 4 of this bulletin, you'll see more information.

On that weekend, our ushers will walk around twice: first for our regular collection and the secondly for the sisters. Please make any checks out to St. Lawrence Church and mark in the memo line "Comboni Sisters." We don't have any envelopes for this, so please if you would - provide your own if you need to.

### **Looking Ahead!**

We should always keep in mind that the Fall will sneak up on us. That means St. Lawrence School will begin, Faith Formation begins, Adult Bible Study, etc. We'll also be sealing the parking lot in August, refinishing the gym floor in the school, and getting ready for the September Garage Sale!

Who ever said things slow down? Have a great week.

# THIS WEEK'S PRAYER

## Monday, July 17

Weekday

8:30 a.m. Mass for Guglielmo Mammoliti by Family

## Tuesday, July 18

Weekday

8:30 a.m. Mass for Mrs. MaryKutty Joseph by Mrs. Jessie John

## Wednesday, July 19

Weekday

8:30 a.m. Mass for Gerry Bader by Patricia Bader

## Thursday, July 20

Weekday

8:30 a.m. Communion Service, prayer for Priestly Vocations

## Friday, July 21

Weekday

8:30 a.m. Mass for Joan Palenik by The DiPerna Family

## Saturday, July 22

Saint Mary Magdalene

4:00 p.m. Mass for Tony Greco by Wife and Family

## Sunday, July 23

### Sixteenth Sunday In Ordinary Time

8:00 a.m. Mass for St. Lawrence Parishioners by Father Chase

10:00 a.m. Mass for NaNa LaBarbra by Luke Swan



*This week, we light the  
Sanctuary Lamp in Memory of*

*Robert Farren*

*By Wendy Farren*

### *Marriage Banns*

*Week I Annette Wakefield & Edward Walsh*

## Readings for the week of July 17, 2023

Monday, July 17:	Ex 1:8-14, 22/Mt 10:34—11:1
Tuesday, July 18:	Ex 2:1-15a/Mt 11:20-24
Wednesday, July 19:	Ex 3:1-6, 9-12/Mt 11:25-27
Thursday, July 20:	Ex 3:13-20/Mt 11:28-30
Friday, July 21:	Ex 11:10—12:14/Mt 12:1-8
Saturday, July 22:	Sg 3:1-4b/Jn 20:1-2, 11-18
Sunday, July 23:	Wis 12:13,16-19Rom 8:26-27/Mt 13:24-30

**Attendance July 1 & 2, 2023**  
**Total-889**  
**Attendance July 8 & 9, 2023**  
**Total-864**

## July 1 & 2, 2023 Collection

	Amount Received	Weekly Budget	Surplus (Shortfall)
Sunday Collection	\$14,364.21	\$13,750.00	\$614.21
General Maintenance	\$963.00	\$807.00	\$156.00
School Support	\$235.00	\$403.00	\$(168.00)

## July 8 & 9, 2023 Collection

	Amount Received	Weekly Budget	Surplus (Shortfall)
Sunday Collection	\$18,839.59	\$13,750.00	\$5,089.59
General Maintenance	\$1,022.00	\$807.00	\$215.00
School Support	\$372.00	\$403.00	\$(31.00)

## Mass Schedule

Saturday 4:00 pm  
 Sunday 8:00 am  
 10:00 am

Mon - Wed, Fri 8:30 am  
 Thu Communion Service 8:30 am.

Holy Days of Obligation  
 Please see bulletin.

## Confessions

Saturday 3:00 pm

## Anointing of the Sick

Please call us if you or a family member wish to be anointed.

## Baptism

Parents should contact the Parish Office at the rectory as soon as they know they are expecting.

## Marriage

Engaged couples should contact us at least **one year** in advance of their desired date.

## Office Hours

Monday - Friday  
 9 a.m. - Noon, 1 pm - 4 pm  
 Phone: 723-1350 fax: 723-1361

## St. Lawrence School

585-225-3870

## Internet and Social Media

Email - rstlawre@dor.org  
 website - stlawrencegreece.org  
 Facebook - www.fb.me/STLGreece

## Parish Staff

### Rectory Office 723-1350

The Very Rev. Lee P. Chase, V.F., S.T.L.  
*Dean, Monroe West Deanery for the Diocese of Rochester, Pastor, x 207*  
 Frank Arvizzigno  
*School Principal, 225-3870*

### Finance Administration

Marisa Stieve  
*Regional Finance Director, x.206*  
 Dawn Nudo  
*Regional Finance Manager, x 205*  
 Cameron Hyzy  
*Regional Business Manager, x203*

### Pastoral Ministry

Deacon David Squilla  
*Pastoral Associate, x. 212*  
 Deacon Manny Asis  
*Senior Deacon, x. 201*

### Administrative Staff

Wendy Speciale  
*Business Manager, x. 201*

Jim Grotke  
*Maintenance, x. 201*

### Faith Formation Ministry

Amanuel Malik  
*Regional Faith Formation Director*  
 (585) 663-2244, x106  
 Debbie Cichelli  
*Regional Faith Formation Administrator, 225-7320*  
 Donna Gray  
*Regional Youth Ministry/CYO, 225-1485*

### Music Ministry

M. Virginia Pierce  
*Music Director, 227-7236*  
 Susan Judkins  
*Song Prayers, 797-3719*  
 Steve Amico  
*Faithful Voices, 225-7338*

# WHAT'S NOW

## This Week At St. Lawrence Church

**Monday, July 17**

**Tuesday, July 18**

Faithful Voices - Church

7:00p.m.

**Wednesday, July 19**

Youth Event - Soccer Field

6:30p.m. - 8:30p.m.

Song Prayers - Church

7:15p.m.

**Thursday, July 20**

**Friday, July 21**

**Saturday, July 22**

**Sunday, July 23**



ROMAN CATHOLIC  
DIOCESE OF ROCHESTER

Victims of sexual abuse should always  
report to the civil authorities.

To receive help and guidance from the  
Roman Catholic  
Diocese of Rochester,  
contact our

Victim Assistance Coordinator:

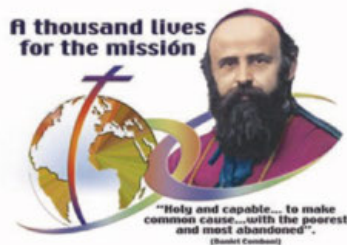
**Deborah A. Housel**

585-328-3228, ext. 1555

Toll-free:

1-800-388-7177, ext. 1555

or by e-mail to [victimassistance@dor.org](mailto:victimassistance@dor.org)



### Mission Appeal

On July 29 & 30, 2023 our Parish will participate in the Mission Appeal Initiative organized by the Missionary Cooperative Plan of our Diocese.

This year we are happy to welcome the Comboni Missionary Sisters, an international missionary community founded in 1872 by Saint Daniel Comboni, the first Catholic Bishop of the immense Vicariate of Central Africa of his time.

The Comboni Missionary Sisters are particularly committed in Evangelization, empowering women through formal and informal education, to train community leaders, and to accompany Church and Societal efforts on advocacy, social justice and dialogue. They serve in 34 countries in the world.

Let us share with them the liveliness of our faith, our desire to serve, and the kindness of our solidarity!

*Comboni Missionary Sisters  
1307 Lakeside Ave.  
Richmond, VA 23228*

Our July Share Sunday collection will be for Hilton Food Shelf on Henry St, in Hilton. Their mission is to obtain, sort, store, and distribute donated and purchased food to people who are in an emergency situation and need food. They must be residents of the Hilton School District and are not covered by other Food Pantries.

The Hilton Food Shelf operates completely on donations. They do not receive government funding and they never charge for their services.

The following items are most needed at this time:

FOOD ITEMS: Cereal, Hot & Cold Crackers or Cookies Juice Peanut Butter  
Jelly Canned Pasta Baked Beans Mayo, Mustard, Ketchup Jell-O & Pudding  
Canned Fruit Pasta Pasta Sauce Tuna Pasta & Rice Sides Rice

CLEANING ITEMS: Dish Detergent Laundry Detergent

PAPER SUPPLIES: Tissue Toilet Paper

PERSONAL HYGIENE ITEMS: Shampoo & Conditioner Soap Hand Soap Deodorant  
Toothpaste

Please drop off your donations at church by 11 a.m. on Sunday, July 16, 2023. Thank you for your generosity in supporting this month's Share Sunday.

The Human Development Committee

**Pastoral Planning: Sharing Our Reality—The Buildings of Our Parishes**

Our seven parishes have a lot of buildings—something like 30 total. These include churches, rectories, schools, parish centers, office space, garages, and a former convent. At least one is in the process of being sold. There is a spreadsheet with detailed information about each parish's buildings, how they are being used, their condition, and special features/assets. If you would like a copy, please ask at your parish office.

## Human Development Committee

### 2022/2023 Year End Summary

Thanks to the continued generosity of St. Lawrence Parishioners, the dedicated efforts of the Human Development Committee members and the extra “helping hands” along the way, we were able to make a difference in the lives of many people in the Rochester area this past year.

**Our Share Sundays** reach out to people in the following agencies:

Hilton Food Shelf  
Home Start Hope  
St. Francis of Assisi Food Shelf  
Focus Pregnancy  
St. Joseph’s House of Hospitality  
Bethany House  
St. Peter’s Kitchen

**Sock Sunday** – You donated 2432 pairs of socks for Bethany House, St Joseph’s House of Hospitality, House of Mercy and St. Peter’s Kitchen.

**Catholic Relief Services Rice Bowl** – You donated \$3250.51 to help people around the world improve their lives.

**Hope Hall and Nazareth Academy** were very excited to receive the many assorted school supplies.

You donated \$5511.00 (money and gift cards) for the Greece Food Shelf’s **Thanksgiving Program**. You also donated an additional 37 pounds of food.

**The Christmas Giving Tree** resulted in approximately 400 gifts being distributed to various agencies.

**Money and gift card donations** were given Morning Star, Day Star, Cameron Community Ministries, Saints Place, and to families in need.

You have opened your hearts to those in need. Once again, we would like to offer our deep and sincere appreciation on behalf of all those you have helped with your generosity.

Your Human Development Committee



**RICHARD J. BORRELLI**

Associate Real Estate Broker

REALTOR®

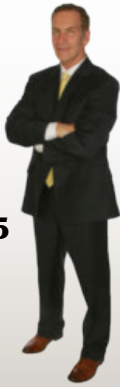
St. Lawrence

Parishioner

rjborrelli@aol.com

www.rickborrelli.com

**585-600-7425**



2450 West Ridge Rd,  
Suite 308 Rochester, NY 14626

SUPPORT OUR  
ADVERTISERS!



Complete  
Residential & Commercial  
Plumbing Services

441 Elmgrove Road,  
Rochester, NY 14606

**426.5068**

www.gattiplumbing.com



**SALES • SERVICE • PARTS**

Repairs on all Makes  
& Models of Lawn Mowers

10 Point Maintenance \$90.00 (Plus Parts)

Pick Up & Delivery Available

**585-392-9010**

1303 Manitou Rd., Hilton, NY

**WE'RE HIRING!**

AD SALES EXECUTIVES

BE YOURSELF.  
BRING YOUR PASSION.  
WORK WITH PURPOSE.

- Paid training • Some travel
- Work-life balance
- Full-Time with benefits
- Serve your community



Contact us at  
careers@4lpi.com or  
www.4lpi.com/careers

ToptotBottomRochester.com

Ask yourself, is your repairman too  
expensive, unreliable, unpredictable?

**#1 IN REPAIRS**

- Gutter Cleaning
- Roofing
- Chimney
- Gutters
- Masonry
- Siding
- Carpentry
- Insulation
- Snow & Ice
- Chimney Liners
- Basement Walls Painted/Repaired
- Water Proofed
- Doors, Etc.

Since 1988  
**TOP TO BOTTOM**

Expert Evaluation  
Fully Insured  
Free Estimates  
Guaranteed  
Senior Discount  
Your Safest Choice

**338-9865**

For 24 Hour Emergencies,  
Call 764-8204



34th Year Parish Sponsor Johnathon A. Geer



**\$10 EGG COMBO BREAKFAST!**  
Egg, Potato, Toast & Coffee - Mon-Thurs  
(Except Holidays)

Must Present Coupon in Person  
(limit 1 coupon per party)

2171 West Henrietta Rd., Brighton, NY

SUNNYSFAMILYDINER.COM

**Community Wishbook**

Rochester's Charity Giving Guide

"Your donations can  
make wishes come true"

If you have items or time to  
donate to a local charity,  
please visit

www.communitywishbook.org

Small Job Specialist

**I'VE GOT A  
TOOL FOR THAT**

Fix or Repair, Build, Assemble & Install

Alan Redfern  
Parishioner

CELL (585) 752-0978

**FULL SERVICE SALON  
USING GOLDWELL PRODUCTS**

Serving the Whole Family Since 1969



(585) 225-3440  
2590 W RIDGE RD, STE 4  
GREECE, NY 14626

Seek **Truth,**  
**Find** Wisdom.



**Madison Place  
A 55+ Community**

NOW LEASING

Brand New Luxury  
Apartment Homes  
Come home to where  
the living is easy

For more information  
please contact Elena

**(585) 392-2177**

www.madisonplacecommunity.com

**WE APPRECIATE OUR  
ADVERTISERS!**

They allow us to print  
this bulletin. Thank you!



**Bellasera Place**

...A Tra-Mac Community

Custom Built Single Family Homes  
Conveniently Located off 519 Mill Rd.

**Building  
Greece  
for Over  
40 Years**

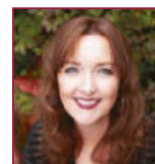
**(585) 392-5200**

www.TRA-MAC.com

**Happier  
at Home**  
In-Home Care



Marie  
President/CEO



Donna  
Business Support Manager

**(585) 633-2060**

www.happierathome/westrochester.com



For ad info. call 1-800-477-4574 • www.4lpi.com

St. Lawrence, Rochester, NY

06-0101

# SUPPORT OUR ADVERTISERS!



**FREE**  
AD DESIGN  
with purchase  
of this space

**CALL 800-477-4574**

**Enhanced Assisted  
Living and Memory  
Care with a *whole  
lotta heart.***

**THE VILLAGE**  
AT MILL LANDING

45 MILL Road • Rochester

**585.720.3033**

TheVillageAtMillLanding.com

**A&J Tax, Inc.**



*Accounting, Payroll,  
& Tax Services*

**Joseph M. Hendrix**

1225 Long Pond Road  
Rochester, NY

**585-227-4626**

## LET'S GROW YOUR BUSINESS

Place Your Ad Here and Support  
Our Parish!

**CONTACT ME Brett Burt**

bburt@4LPi.com • (800) 477-4574 x6443

**Business • Personal  
Estates & Trusts  
Out of State Returns**

joe@ajtaxinc.com  
www.ajtaxinc.com



**GENE WELCH**

ATTORNEY / PARISHIONER

CALL TODAY: (585) 899-1458

400 LINDEN OAKS SUITE 110  
ROCHESTER, NY

Attorney Advertising: Prior results do not guarantee a similar outcome.

## IF YOU LIVE ALONE You Need

**MDMedAlert!**<sup>TM</sup>  
At HOME and AWAY!

✓ Ambulance ✓ Police ✓ Family  
✓ GPS & Fall Alert

**CALL NOW!**

**800.808.9294**

As Low As  
**\$19<sup>95</sup>**  
/mo.

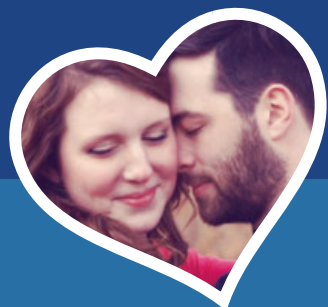


\*I have peace of mind!  
Mom remains independent



[md-medalert.com](http://md-medalert.com)

**catholicmatch®**  
New York



CatholicMatch.com/NY



Serving Greece  
Residents  
for over 60 years!

858 Manitou Rd, Hilton, NY

Phone: **585-392-3222**

Fax: **585-392-2126**

[www.nysfence.com](http://www.nysfence.com)

**SUPPORT  
OUR PARISH**

Local business ads  
sponsor the printing of  
our bulletin.  
[4lpi.com/adcreator](http://4lpi.com/adcreator)

**Place Your Ad Here and  
Support our Parish!**

Instantly create and purchase  
an ad with

**AD  
CREATOR  
STUDIO**



[4lpi.com/adcreator](http://4lpi.com/adcreator)

*Reliable, Local,  
Family Owned & Operated*  
Kitchen, Bathroom, Basement Remodeling,  
Flooring, Windows, Tile, Carpentry,  
Plumbing, Electrical & more

NO JOB TOO BIG OR SMALL - FREE ESTIMATES

**(585) 303-6979**



[rosaremodeling@rochester.rr.com](mailto:rosaremodeling@rochester.rr.com)  
[www.rosaremodeling.com](http://www.rosaremodeling.com)



For ad info. call 1-800-477-4574 • [www.4lpi.com](http://www.4lpi.com)

St. Lawrence, Rochester, NY

06-0101